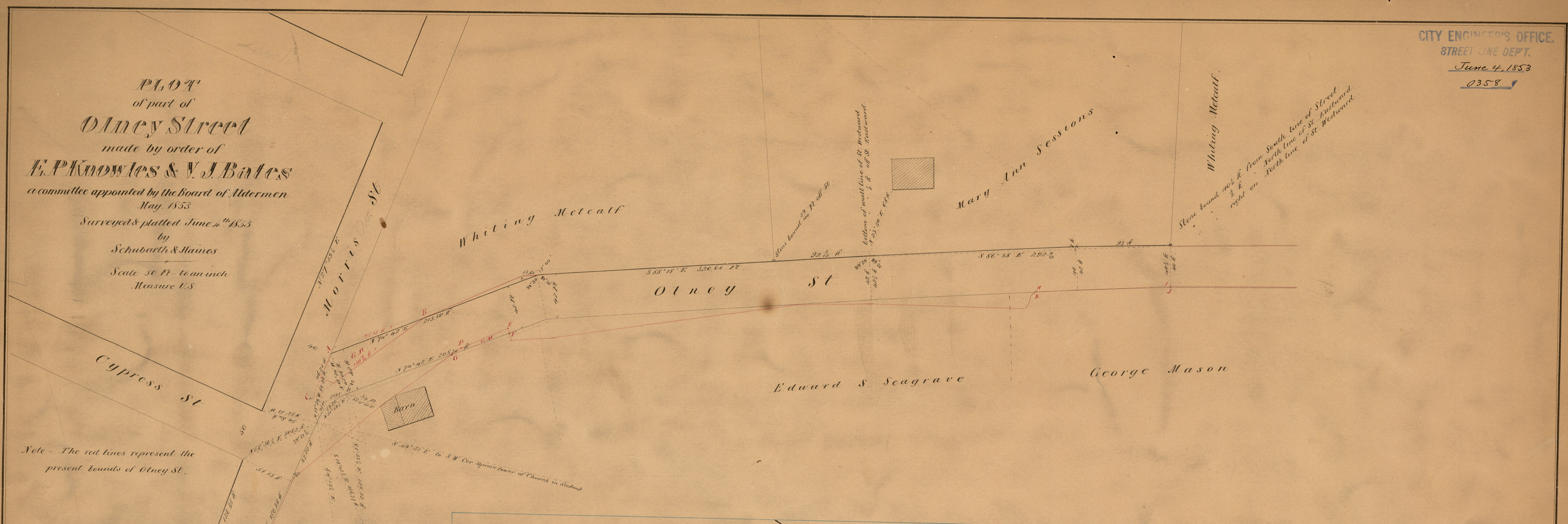


PLAT
of part of
Olney Street
made by order of
E. P. Knowles & V. J. Bates
a committee appointed by the Board of Aldermen
May 1853
Surveyed & platted June 4th 1853
by
Schubarth & Haines
Scale 50 ft. to an inch
Measure U.S.

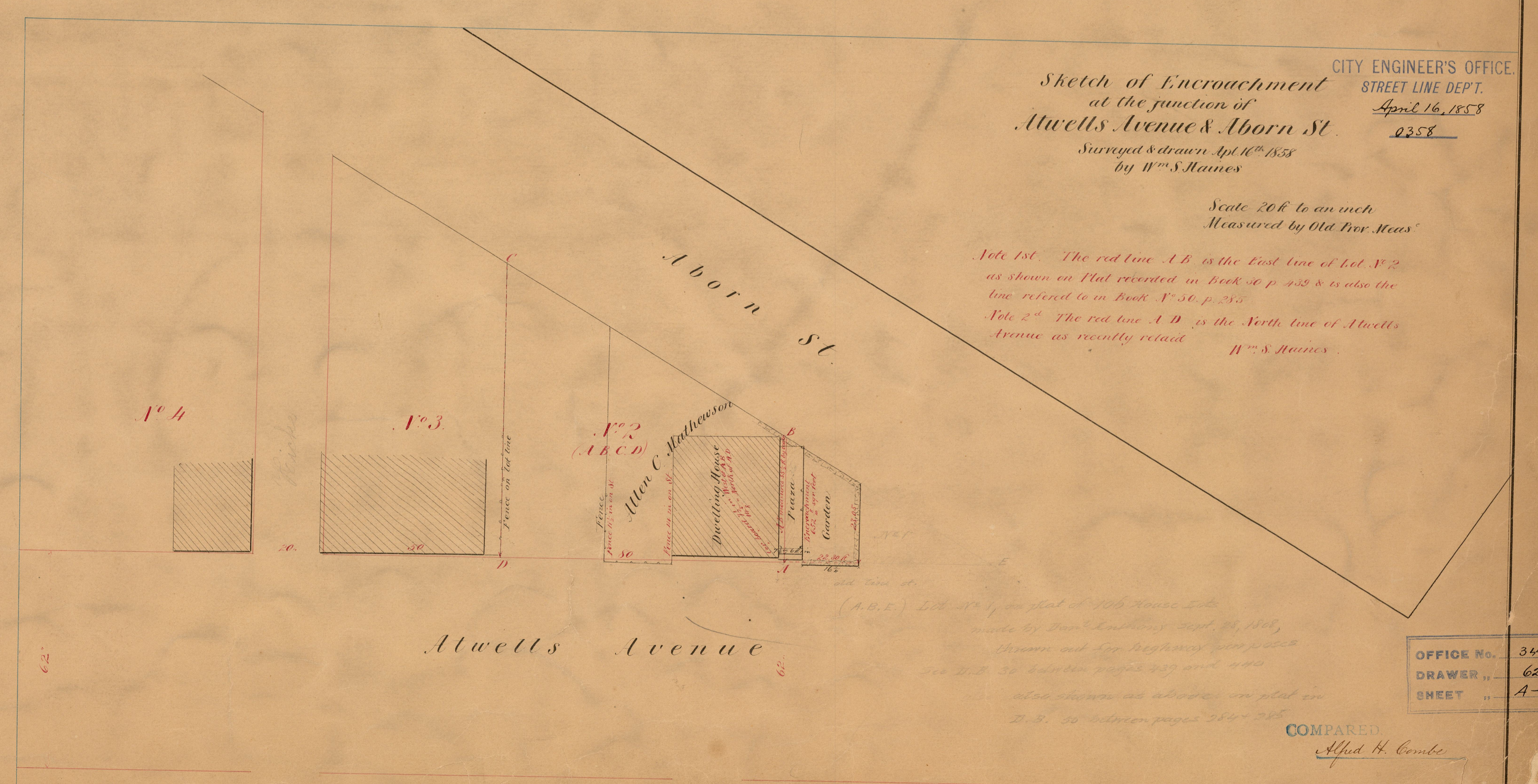


Note - The red lines represent the present bounds of Olney St.

CITY ENGINEER'S OFFICE.
STREET LINE DEPT.
April 16, 1858
0358
Sketch of Encroachment
at the junction of
Atwells Avenue & Aborn St.
Surveyed & drawn April 16th 1858
by W^m S. Haines

Scale 20 ft. to an inch
Measured by Old Iron Meas^{rs}

Note 1st. The red line A B is the East line of Lot N^o 2 as shown on Plat recorded in Book 50 p. 459 & is also the line referred to in Book N^o 50 p. 285.
Note 2^d. The red line A D is the North line of Atwells Avenue as recently retold W^m S. Haines.



OFFICE No.	348
DRAWER "	62
SHEET "	A-3

COMPARED
Alfred H. Combe